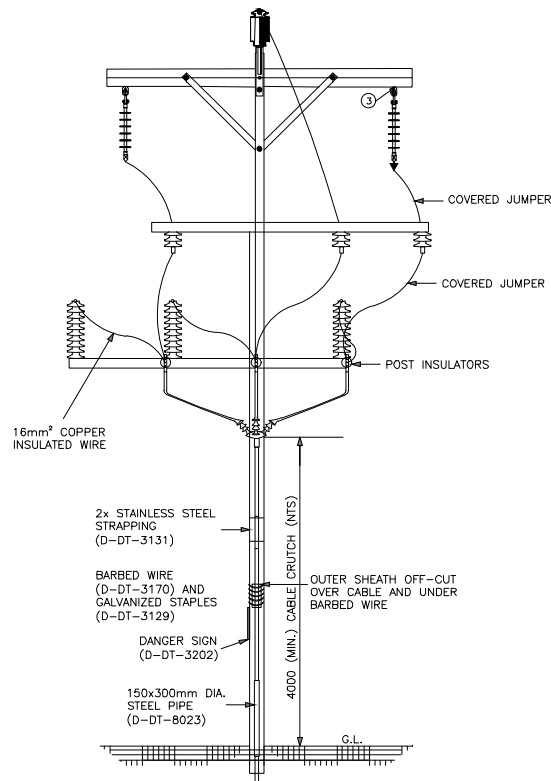
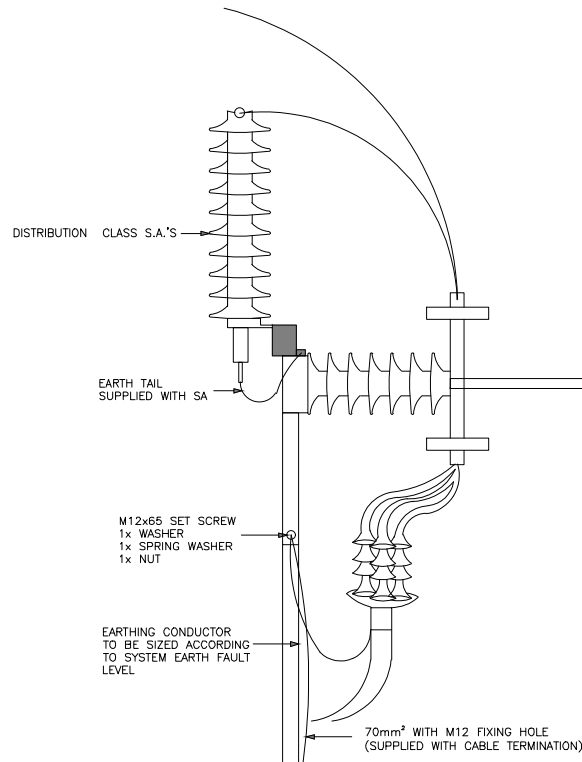


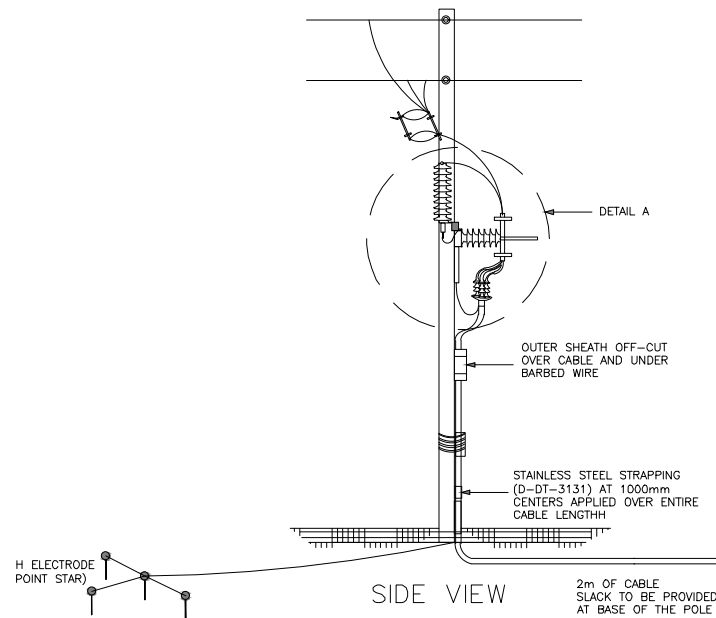
REFERENCE DRAWINGS		
ITEM	DESCRIPTION	DWG NO
CONDUCTOR / INSULATOR ATTACHMENTS		
1	POSTS -TOP GROOVE TIES	D-DT-0256
2	SUSPENSION -SUSP.CLAMP/ARMOUR ROD	D-DT-0253
INSULATOR / STRUCTURE ATTACHMENTS		
3	SUSPENSION -EYEBOLT	D-DT-0378
4	POSTS -SHORT SPINDLE	D-DT-0390
X-ARM STRUCTURE ATTACHMENTS		
5	SUSPENSION -2500 WOOD CROSSARM/POLE	D-DT-0316
BONDING AND EARTHING		
	INSULATION CO-ORDINATE	D-DT-0310
PHASING		
	PHASE CONFIGURATION	D-DT-0311



FRONT VIEW

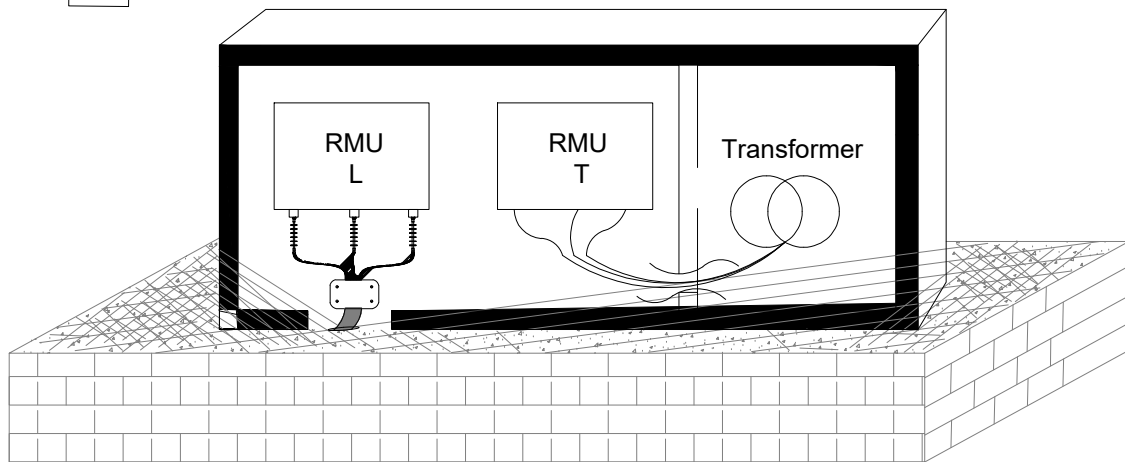


EARTHING: DETAIL A



SIDE VIEW

TERMINATION INTO MINI SUB



NOTES:  
TENDER DRAWING TO BE READ WITH ALL TENDER DOCUMENTS.  
INCLUDE SCOPE OF WORK, SCHEDULE OF QUANTITIES AND  
SPECIFICATIONS FOR ELECTRICAL AND ELECTRONIC WORKS



ISSUE FOR TENDER

100 MILLIMETRES ON ORIGINAL DRAWING		
100		
BEFORE CONTRACT COMMENCES		
AFTER CONSTRUCTION CONTRACT HAS COMMENCED		
N	DATE	AMENDMENTS
1	2025-04-23	ISSUE FOR TENDER
COPYRIGHT IS VESTED IN V3 CONSULTING ENGINEERS IN TERMS OF THE COPYRIGHT ACT (ACT 98 OF 1978)		



PROJECT  
TSHAME WWTW REFURBISHMENT

DRAWING DESCRIPTION  
CABLE TERMINATION ONTO OVERHEAD LINE  
WITH FUSE CUT-OUT ASSEMBLY, GENERAL  
ARRANGEMENT

DRAWING NO.	REVISION
10909001 - 3006	T1

DESIGN	W.R.	CHECKED	OK
DRAWN	Z.M.	SCALE	AS SHOWN
APPROVED		INCEPTION DATE	2023-05-09
FILE PATH: \\S:\PROJECTS\TSHAME\10909001 TSHAME\WWTW / 04 DOC PROC / 04 DRAW / 01 V3			

ISSUED FOR TENDER